

Hop-on scheme and calls for improved access to excellence

Training

“Improve your Chances to Get Horizon Europe
Funding”

7 December 2023, 14:30 – 17:30
Research Council of Lithuania,
Gedimino pr.3, Vilnius

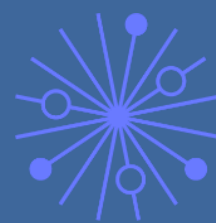




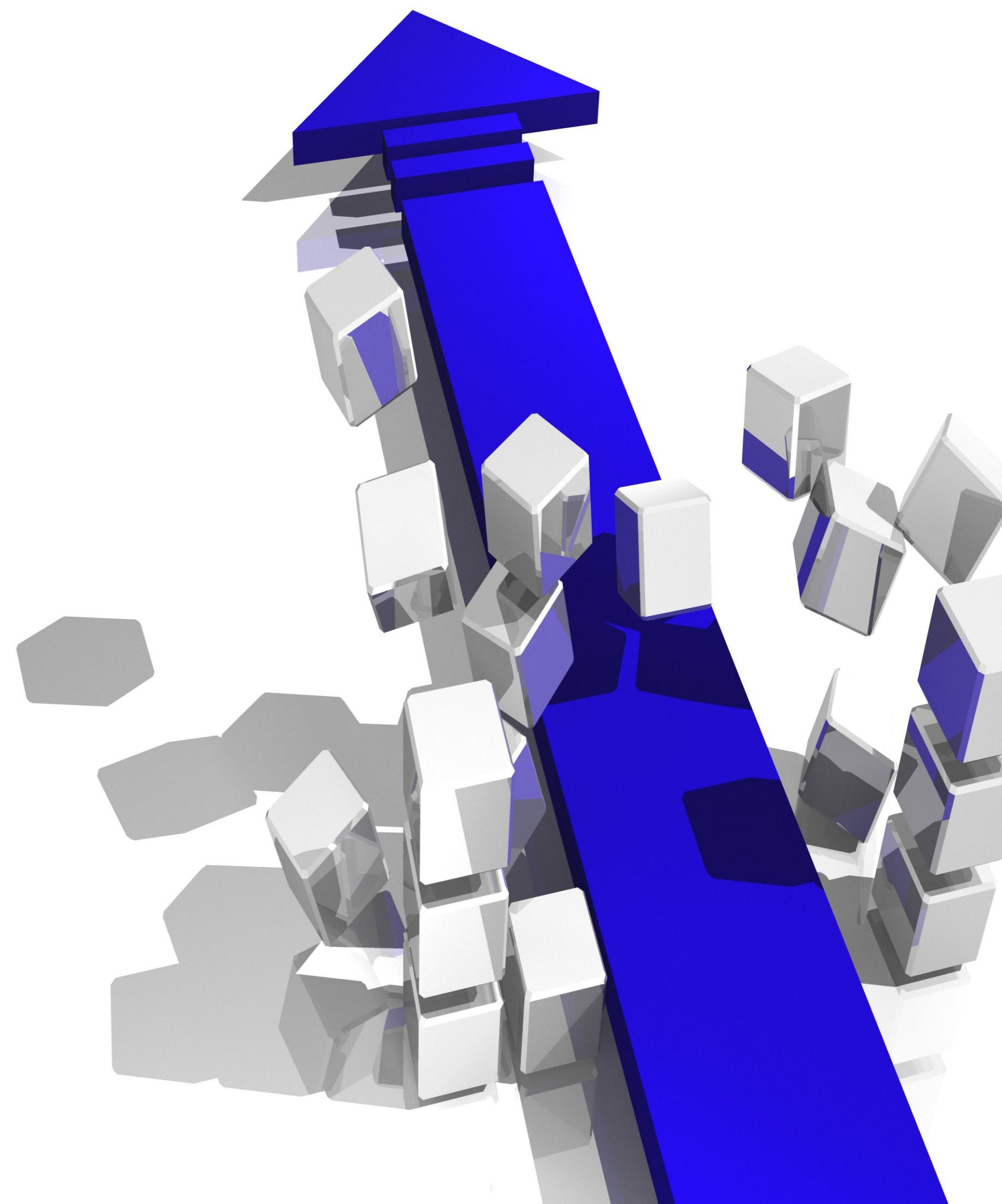
Agenda

- Widening: calls for improved access to excellence
- Important information about the Hop On topic
- Mechanism of the Hop On instrument
- Problems of understanding the philosophy and terms of Hop On
- Analysis of results of the previous Hop On call
- Actions to improve Hop On Facility, proposed by Polish NCPs in the Widening component of WIDERA





Widening: calls for improved access to excellence



The System of Widening Calls

Destination „Improved access to Excellence”

(requires a stronger R&I system where best practice is disseminated faster across the European Union)

Capacity building in science and administrative competencies, leadership roles under Pillar 2	Creating new or modernising existing centres of excellence by means of close and strategic partnerships with leading institutions abroad	Catalyzing better impact and sustainability of the widening actions	Innovation excellence focus, teaming up between academia, business, government and society
<ul style="list-style-type: none"> • Twinning • European Excellence Initiative (EEI) • Hop On Facility 	<ul style="list-style-type: none"> • Teaming for Excellence 	<ul style="list-style-type: none"> • Dissemination and Exploitation Support Facility • Pathways to Synergies 	<ul style="list-style-type: none"> • Excellence Hubs

The System of Widening Calls Destination „*Attracting and mobilising the best talents*”

(supports further progress on the free circulation of knowledge in an upgraded, efficient and effective R&I system)

Support universities or research organisations to attract and maintain high-quality human resources under the direction of an outstanding researcher, and to implement structural changes

Create opportunities for brain circulation for research and innovation talents across the ERA and across sectors, aiming to revert the brain drain from Widening countries. Foster a better exploitation of existing (and possibly jointly managed) research infrastructures in the targeted countries

Builds on the MSCA Postdoctoral Fellowships action, the target group are host organisations located in Widening Countries

ERA Chairs

ERA Talents

ERA Fellowships



Important information about the Hop On Topic



Hop On Facility

TOPIC ID: HORIZON-WIDERA-2023- ACCESS-06-01

Type of action: HORIZON-RIA (Research and Innovation Actions)

Type of MGA: Budget-Based

Deadline model: multiple cut-off

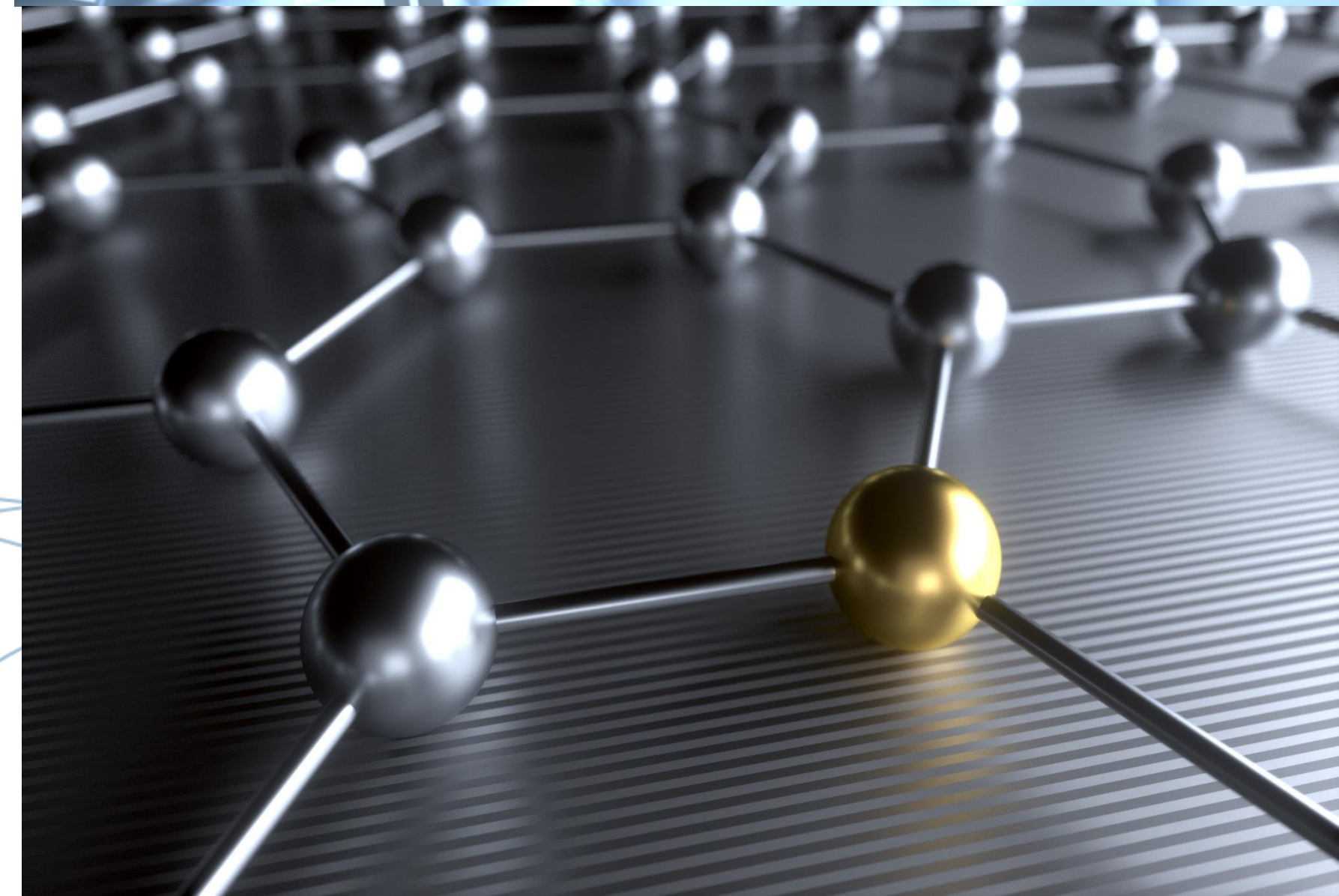
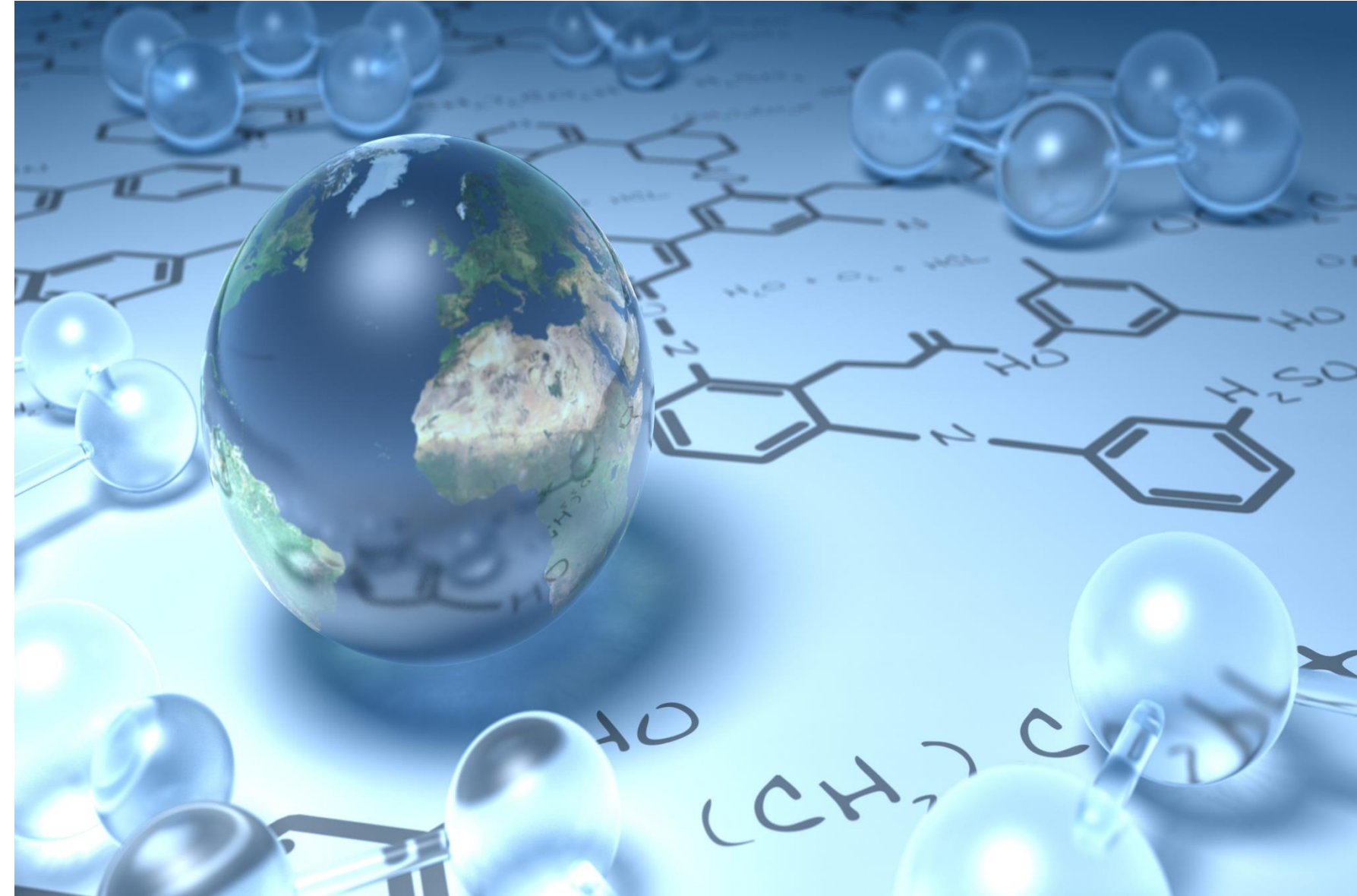
Opening date: 10 January 2023.

Cut Off Date: 26 September, 2024 17:00:00 Brussels time

Estimated EU contribution to the project (in EUR million): from 0.10 to 0.60

Estimated number of projects to be financed: 160 (2 cut-offs)

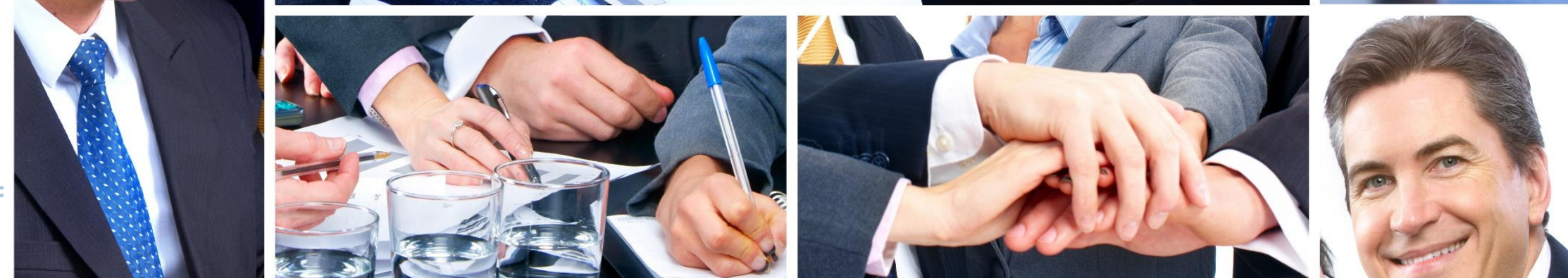
Project duration: depending on the duration of the Horizon Europe Research and Innovation (RIA) projects to which the new partner will join. The proposed 'new' action cannot be extended after the original grant agreement has expired.





Hop On aim: The scheme aims to improve the inclusiveness of Horizon Europe by involving more research institutions from **Widening countries** under Horizon Europe **Pillar 2** and **EIC Pathfinder** actions.

Consortium: consortia of ongoing funded **RIA** projects of **Horizon Europe** (applicants for Hop On); **legal entities** from countries with low research and innovation performance (Widening states).



Hop On Facility allows:

- (a, b) ***legal entities from countries with low research and innovation performance***
- (c) to join
- (d) already selected joint actions
- (e) ***in the field of scientific research and innovation***
- (f) after the ***consent of the relevant consortium***
- (g) and ***provided that legal entities from such countries do not already participate in these actions.***

Hop On Facility is open to **all** (**don't forget - only all RIA project topics**) ***Pillar 2 and EIC Pathfinder topics***. Proposals that contribute to EU policy objectives for ***the transition to a green and digital economy*** are particularly encouraged.

A Hop On Facility action should be treated as an opportunity for the original consortium ***to launch additional activities that were not planned from the beginning, and to expand the scope and impact of the project.***

- The Hop On Facility integrates ***one additional participant from a Widening country into an ongoing Pillar 2 or EIC Pathfinder project, while complementing the appropriate Task(s) or Work Package and the cost incurred by the additional participant.***
- Only ***the coordinator*** of an ongoing eligible project funded by Horizon Europe ***is eligible to apply.***
- ***The coordinator may request only one additional partner from the Widening country.*** This is because multiple submissions may be interpreted as a lack of focus and prioritization, which may jeopardize the objectives of the call.

- On the other hand, ***the same institution may try to join ("to hop on") several projects as a partner, there are no restrictions in this matter.***
- When applying for the Hop On Facility, ***the coordinator must confirm that all consortium partners consent to the accession of a new partner from a Widening country, as well as to the proposed by the new partner activities*** within the scope described in Part B of the application.
- If several applicants apply to be partners to the same project, ***the selection of the most suitable partner remains at the discretion of the consortium.***
- The consortium ***may resubmit an unfunded application for the subsequent cut-off dates.***

- ***Only Horizon Europe projects are eligible*** to participate in the Hop On call, Horizon 2020 projects cannot benefit from this Facility.
- ***An IA or CSA project coordinator cannot apply*** to the Hop On competition. Only ongoing Horizon Europe Research and Innovation (RIA) projects are eligible to apply.
- ***The success level of the Hop On Facility*** depends on the ratio between the requested cumulative budget of submitted proposals and the available budget of the call. If we extrapolate from the experience of the 2022 call, we can expect a sufficient budget for most proposals.

Timeline of Hop On

The current work programme haven't applied yet any time limits, when, after signing the grant agreement, the application for hop-on must be submitted, because the majority of the HE RIA projects didn't start before the mid-2022.

However, according to the EC, ***a reasonable minimal duration of a new partner participation should be not less than 18-month long*** in order to achieve the intended goals.

A very important Hop On specific feature

In Hop On there are ***2 levels of Expected Outcomes and Expected Impact***. On the one hand, the proposal must indicate how the new partner will contribute to the creation of ***research results and impacts of the ongoing HE RIA project, to which the new partner joins***, and on the other hand, how the new partner will implement ***Expected Outcomes and Expected Impact in terms of Hop On Facility as a Coordination and Support Action***.

Expected Outcomes

- **At system level**, it mobilises excellence in the Widening countries, increases visibility of the participants from the Widening countries, improves knowledge circulation, and reduces lack of participation of the Widening countries in specific thematic domains;
- **At organisation level**, it opens up silos of established closed consortia, improves research excellence of the Widening country's institutions in specific fields, enlarges outreach of the participants' R&I actions and provides access to new talent pools;
- **At the level of the beneficiary**, new competencies and skills for working in transnational projects including research management and dissemination and exploitation are acquired.

Expected Impact

- Increased science and innovation capacity for all actors in the R&I system in Widening countries;
- Structural changes leading to modernised and more competitive R&I systems in eligible countries;
- Reformed R&I systems and institutions leading to increased attractiveness and retention of research talents;
- Mobilisation of national and EU resources for strategic investments;
- **Higher participation success in Horizon Europe and more consortium leadership roles;**
- **Stronger links between academia and business and improved career permeability;**
- **Strengthened role of the Higher Education sector in research and innovation;**
- **Greater involvement of regional actors in the R&I process;**
- **Improved outreach to international level for all actors.**

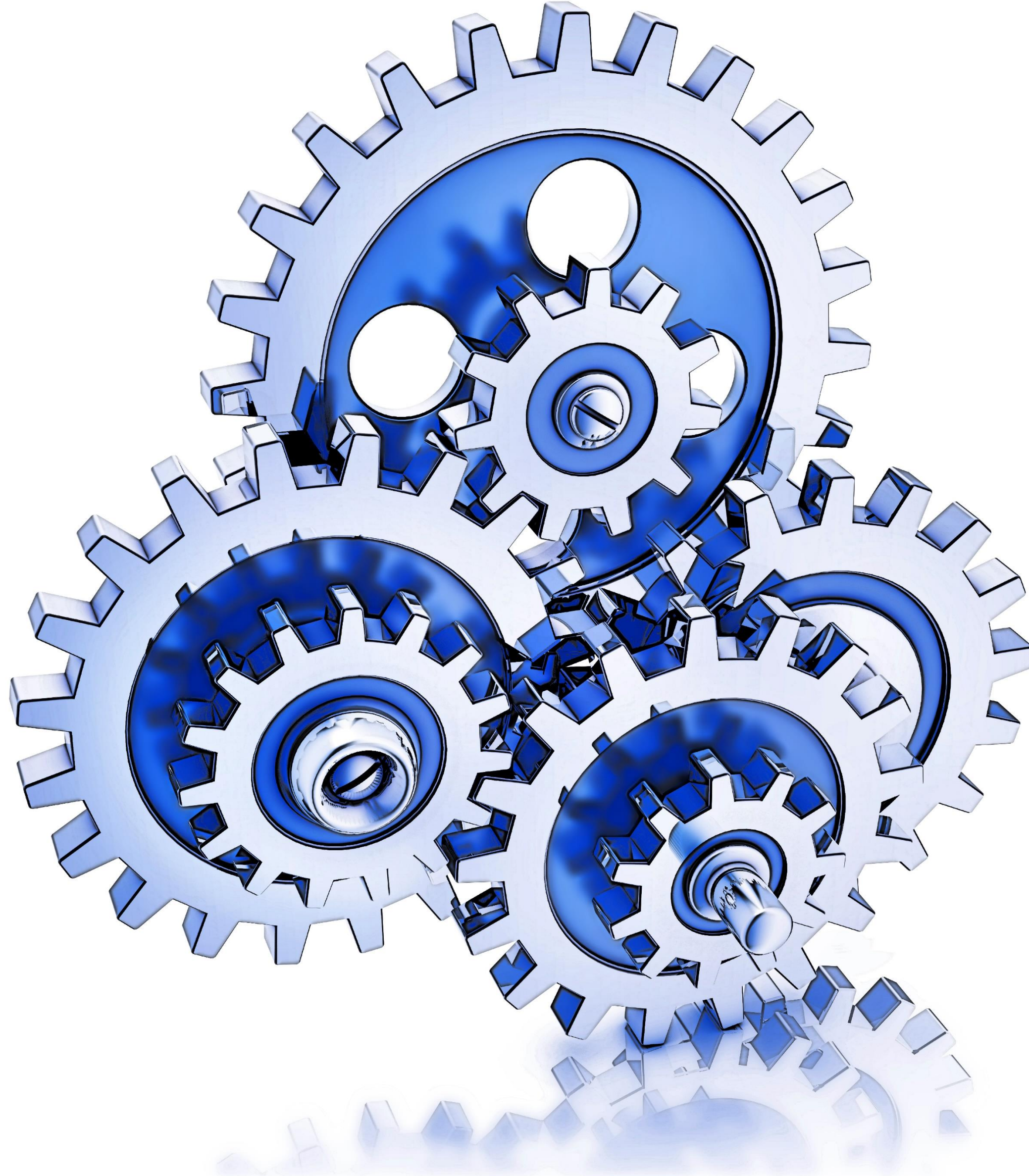
NCBR 

Krajowy Punkt Kontaktowy
Programów Badawczych UE



NCP_
WIDERA.NET

Mechanism of the instrument



Proposal

NB: Hop On is a competition! It is based on competitive rules!

Proposals should:

- demonstrate the added value of the new partner to the R&I in the project and present a visible and distinct Work Package of new activities which are proposed by the acceding partner;
- include a detailed description of the profile of the new partner and its role in the existing project.

Applications should include:

- a detailed description of the profile of the new partner;
- its role in the existing project;
- details on the new Work Package and/or the changes to existing Work Packages resulting from the addition of the Widening partner (i.e. new/actualized Work Packages, deliverables, milestones).

Proposal

Only the coordinator and the new partner should be mentioned in **part A** of the Hop On proposal.

The full Hop On proposal is ***not bound by any page limit of the original calls under Pillar 2***. Nevertheless, applicants should provide ***a concise and accurate description of the Widening partner and of the proposed by this partner new activities*** by filling in the template Part B available in the call submission page.

The page limit for the Hop On Facility application Part B is 8 pages maximum.

Proposals should describe **the new specific tasks proposed by the new partner as a new separate Work Package or as a contribution of new activities / tasks to the existing Work Packages.**

If the new partner will contribute to more than one Work Package, in the context of Hop on, “Work Package” should be understood as all the activities/tasks to which the new partner will contribute.

Proposal

Except part B, when submitting the proposal, the coordinator must submit an additional ***mandatory annex titled “Project Grant Agreement”***. This mandatory annex should be the PDF document (max. 50 MB) of the running GA, Part A & Part B and the Budget table.

Selected consortia will be invited to submit an amendment request because of accession of a new partner, modification of the description of the action and upgrade of the budget.

Budget

The budget increase must be exclusively ***for the benefit of the new partner*** with ***the exception of a coordination fee of up to 10% of the increased budget*** to be allocated to the coordinator of the consortium. *For example, if the proposal applies for 600 000 EUR of the budget increase, the coordinator will get 60 000 EUR, and the new partner – 540 000 EUR.*

All ***cost categories***, eligible in scope of the ongoing RIA action, to which a new partner joins, will be eligible in the respective Hop On Facility project.

Requesting ***the coordination fee***, the coordinator should provide an explanation on the additional integration efforts for the new partner. The coordination fund is intended to cover any additional administrative and management activities that the coordinator needs to undertake as a result of the expansion of the consortium (e.g. increased reporting and monitoring workload, increased number of meetings, visits, etc.).

Proposal's evaluation

The proposal will be evaluated:

- by independent experts (*indeed, the Executive Agencies (EAs) in charge of the evaluation aim at using the same evaluators who evaluated the base project in order to ensure consistency and to best recognize the added value of the new partner and its tasks; standard evaluation criteria for RIA will apply*);
- focusing on the ***added value of the new partner***;
- focusing on ***Work Package(s) or Task(s) proposed by the added institution in the context of the ongoing project***;
- the ongoing project as such ***is not a subject of the evaluation***.

In case of proposals receiving equal score in the ranking procedure, ***a preference will be given to proposals with a particular relevance to green or digital transitions of the economy***.

Searching for project/partner

The matchmaking is primarily left to the initiative of:

- coordinators interested in extending their consortia;
- hop-on candidates seeking suitable host projects.

For the latter case, candidates are encouraged to:

- screen the list of eligible projects published on the call web site on the Funding & Tenders Portal:

<https://ec.europa.eu/info/funding-tenders/opportunities/portal/screen/opportunities/horizon/hop-on>

- use information published under CORDIS:

<https://cordis.europa.eu/>

- use the partner search tool on the Funding & Tenders Portal
- participate in the brokerage events of Horizon Europe.

Problems of understanding the philosophy and terms of Hop On



Problems of understanding the philosophy and terms of Hop On

Widespread opinion 1. *New consortium members are added because the original consortium can not implement the project and must be changed.*

Real state:

The use of the Hop On Facility does not indicate, in any case, the need to change the original consortium.

Rather, a Hop On Facility project should be treated as **an opportunity for the original consortium to propose additional activities which were not planned from the beginning in the base project and to expand the scope and impact of the project.**

Problems of understanding the philosophy and terms of Hop On

Widespread opinion 2. *Hop On is a mechanism for new consortium members from Widening countries of automatic joining to existing consortia, if partners from Widening countries are interested.*

Widespread opinion 3. *A partner from a Widening country needs only to agree with the coordinator which activities and products from the base project will be implemented by him.*

Real state:

*Hop On Facility is a competition, the same as other in Horizon Europe. An interested potential partner from a Widening country is to add his new activities to the project (in the scope related to the topic of the basic project) and **add scientific value to the project by his participation.***

Problems of understanding the philosophy and terms of Hop On

Widespread opinion 4. *The basic project consortium should not refuse to add a new partner from a Widening country. Such addition is the responsibility of the consortium, indicated by the EC.*

Real state:

*The addition of a new partner **should not violate the consortium's autonomy in decision-making** concerning the consortium structure, objectives, scope of the project, its content and results, **which the consortium specified in the application, and the EC approved by the decision on the project funding**. So, no one may interfere the integrity of the research methodology, research protocol, etc., specified by the consortium during the application preparation, unless the consortium is interested in extension, or, under the influence of an interesting idea from a potential partner from a Widening country, decided to include him in the project.*

The decision about participation of a new partner from a Widening country in Hop On is not made even by the coordinator, but by the entire consortium through consensus.

Problems of understanding the philosophy and terms of Hop On

Widespread opinion 5. The list of eligible projects for Hop On on F&T Portal ([Partner Search Services](#)) is the main source for a potential partner from a Widening country to search for a consortium, and each consortium from this list must add this new partner.

Real state:

*The list is only a **supporting tool**, an automatic list of all consortia eligible for Hop On. When this list is created, the EC does not ask consortia about their interest, but only advises in this way a potential partner from a Widening country whether this consortium is eligible and may be contacted regarding Hop On.*

Problems of understanding the philosophy and terms of Hop On

Widespread opinion 6. *Hop On undermines the autonomy of the consortium and the independence of research. This tool must be canceled.*

Real state:

If the decision to add a new partner from a Widening state is not imposed on a consortium, and the positive decision of a consortium is its internal decision, just supported by the EC, this approach in any way does not undermine the consortium's autonomy and research independence. On the contrary, it helps to improve the project activities and results during the project duration and supports institutions from Widening countries in their aspiration to excellence.

Problems of understanding the philosophy and terms of Hop On

Widespread opinion 7. *Western European countries have better conditions and financing of science, they benefited from colonial policy, they did not suffer so much from wars, totalitarian regimes, etc., so they are indebted to the Widening countries and should be obliged to accept new partners (there are proposals - up to 4 Widening partners for one basic project) and the EC should make it mandatory for basic consortia. The EC itself should conduct a competition for candidates from Widening countries and force basic consortia to add them.*

Real state:

In such a case, autonomy of a consortium and independence of research will obviously be undermined. This approach has nothing in common with the ERA principles or the European Charter for Researchers and undermines all ethical and professional aspects of scientific activity. Moreover, it is impossible to imagine positive cooperation and good atmosphere in such a consortium.

NB!!!

Question to the EC: „Maybe, it is more beneficial for applicants submitting proposals related to the calls of the Pillar 2 or the EIC Pathfinder to exclude the potential partner from a Widening country and apply later for the Hop On call?

Answer of the EC: „Applicants should always include all relevant partners when submitting proposals. Leaving a partner at the sideline can impair the quality of the consortium and result in lower evaluation scores. Proposals might also lack adequate geographical scope or diversity. Furthermore, even if a proposal without the Widening partner is funded, there are no guarantees at all that joining of this partner will be funded through the Hop On Facility, **as this is a competitive call based on the excellence principle**”.

NB!!!

Question to the EC: „Is it possible for a coordinating entity based in France to bring into the consortium one of its departments based in Outermost Countries?”

Answer of the EC: „Yes, this is possible because the partner from an Outermost Region will be considered a Widening partner, provided it has a legal address over there”.

It concerns only Hop On, not all the other Widening topics!!!!



Analysis of results of the previous call („Hop On Facility” HORIZON-WIDERA- 2022-ACCESS-07-01)



Hop On Facility - results

Hop-on calls until now – only HORIZON-WIDERA-2022-ACCESS-07-01 Hop On Facility of WP WIDERA 2021-2022 are evaluated. Call HORIZON-WIDERA-2023-ACCESS-06-01 (cut off 28 September 2023) – no results yet.

Opening date: January 27, 2022

Two cut-off dates: April 20, 2022 and November 10, 2022.

Total budget: 40 mln EUR.

First cut-off budget: 2,9 mln EUR.

Second cut-off budget: 37,1 mln EUR.

List of the projects eligible to participation included **31 ongoing RIA projects with signed GAs** without a Widening partner.

1 proposal was rejected due to formal reasons (HE Pillar 2 (Health), *the applicant was the coordinator of a grant for a Coordination and Support Action (CSA, not RIA) where two partners from Widening countries were already involved in the consortium.*

7 proposals were evaluated:

- 5 projects from EIC Pathfinder and
- 2 from HE Pillar 2 (Health) (1 didn't receive the funding)

6 proposals were evaluated *positively and received funds.*

Proposals were submitted by coordinators from higher education entities from: Ireland (x2), Spain, Germany, Italy and Sweden.

Hop On partners were from Slovenia (x2), Portugal, Poland, Estonia and Ukraine.

Coordinators – only higher education entities.

Partners:

- Research organizations: 3
- Medium and higher education institutions: 2
- Private entities: 2 (SME 2), 1 below threshold (from Poland)
- Public entities: 0

The second cut-off results (10.11.2022)

List of the projects eligible to participation included ***198 ongoing RIA projects with signed GAs without a Widening partner.***

81 applications were submitted.

One of the coordinators submitted 4 applications. Because a coordinator is entitled to submit only one, the coordinator decided to withdraw 3 applications and finally selected one application for evaluation.

The second cut-off results (10.11.2022)

Inadmissible proposals: 2

“None of the ongoing HE or EIC Pathfinder project eligible according to the criteria of eligibility is related to the proposal. Furthermore, the application is not complete: an annex is missing and the Part B template, available in the application system, has not been used.”

Noneligible proposals: 12

„Non of HE or EIC Pathfinder project is associated with the application”: 6

„The project related to the proposal is an Innovation Action, which is not a type of action eligible to this call”: 1

„The ongoing HE project already includes a beneficiary from a Widening country. In this regard the proposal is ineligible”: 4

„The proposal is related to the grant of H2020. In this regard the proposal is ineligible”: 1

Results of second cut-off (10.11.2022)

64 eligible applications were submitted by:

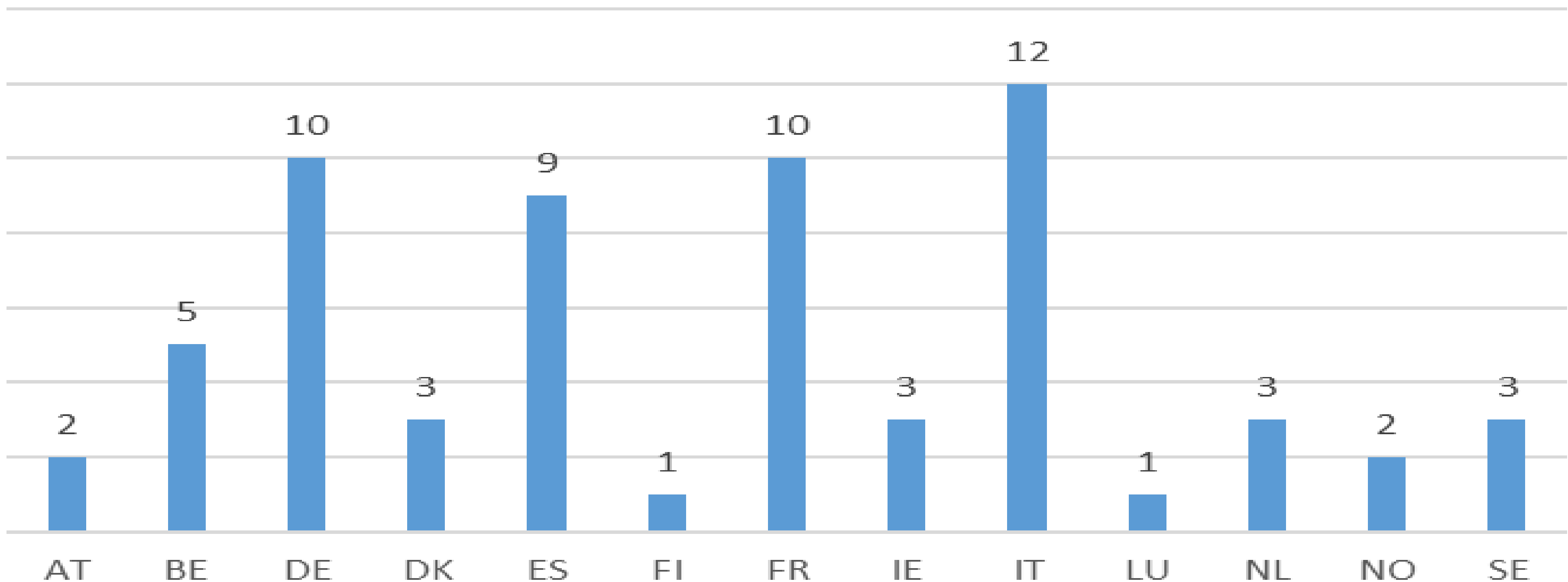
higher education institutions, research organizations and private companies from: Italy (x12), Germany and France (x10), Spain (x9), Belgium (x5), Ireland, Sweden, the Netherlands and Denmark (x3), Austria and Norway (x2), Finland and Luxembourg (x1).

Partners in the Hop-On applications were from: Portugal (x13), Poland and Cyprus (x7), Czech Republic and Greece (x6), Slovenia (x5).

60 applications were funded.

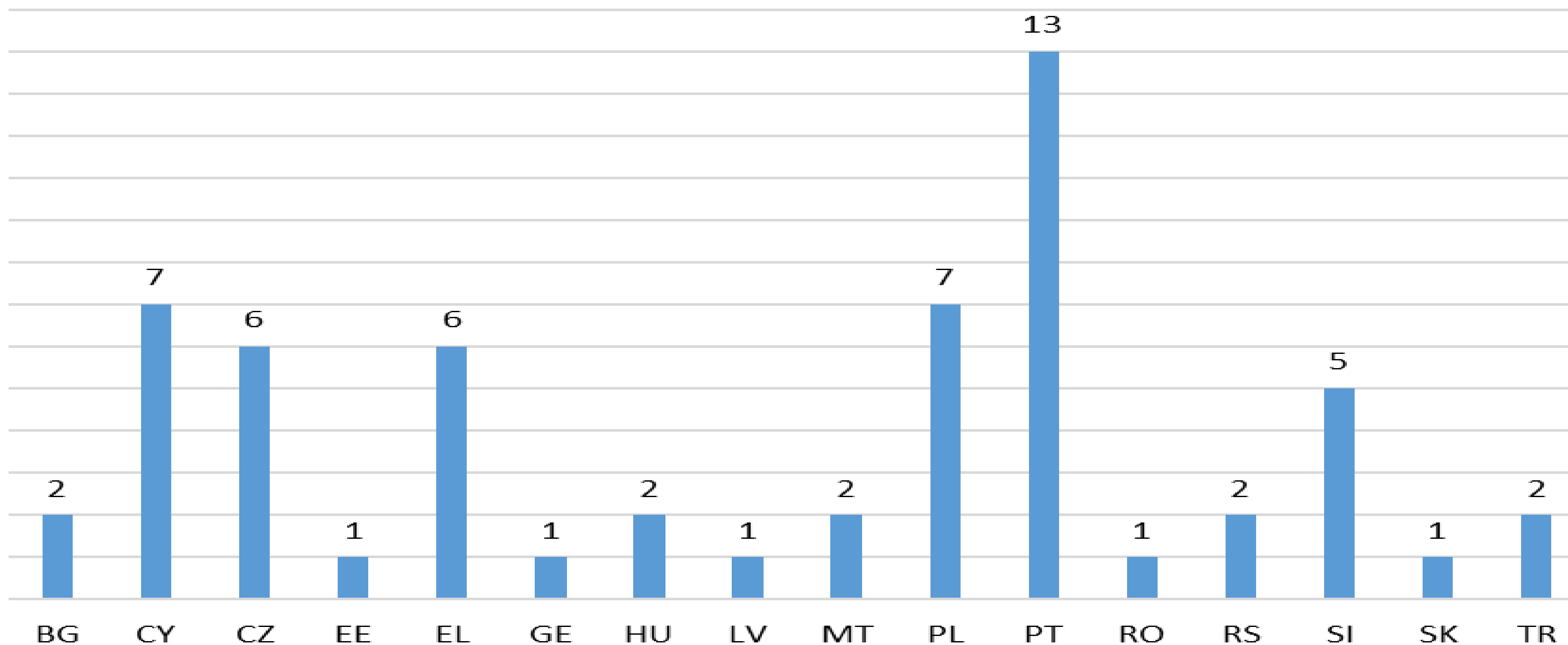
Results of second cut-off (10.11.2022) *Participation by country*

Number of Coo countries participation in successful proposals



Results of second cut-off (10.11.2022) *Participation by country*

Number of widening countries participation in successful proposals



Results of second cut-off (10.11.2022) *Participation by country*

Country	Submitted proposals	Funded proposals	Success rate
Associated Countries			
Georgia	1	1	100%
Norway	2	2	100%
Serbia	2	2	100%
Türkiye	3	2	66,67%
EU Member States			
Austria	2	2	100%
Belgium	5	4	80%
Bulgaria	2	2	100%
Cyprus	7	7	100%
Czechia	8	6	75%

Results of second cut-off (10.11.2022) *Participation by country*

Country	Submitted proposals	Funded proposals	Success rate
Denmark	3	2	66,67%
Estonia	1	1	100%
Finland	1	1	100%
France	11	10	90,91%
Germany	10	9	90%
Greece	6	6	100%
Hungary	2	2	100%
Ireland	3	3	100%
Italy	12	12	100%
Latvia	1	1	100%

Results of second cut-off (10.11.2022) *Participation by country*

Country	Submitted proposals	Funded proposals	Success rate
Luxembourg	1	1	100%
Malta	2	2	100%
Netherlands	3	3	100%
Poland	8	7	86,45%
Portugal	13	13	100%
Romania	1	1	100%
Slovakia	1	1	100%
Slovenia	5	5	100%
Spain	9	9	100%
Sweden	3	3	100%

Results of second cut-off (10.11.2022) Areas

Area	General number of proposals	Number of funded proposals	Success rate
Cluster 1: Health	9	8	88,89%
Cluster 7: EIC Pathfinder	19	18	94,74%
Cluster 5: Climate, Energy and Mobility	10	10	100%
Cluster 4_CNECT: Digital, Industry and Space	11	9	81,82%
Cluster 4_HADEA: Digital, Industry and Space	9	9	100%
Cluster 2: Culture, creativity & inclusiveness	1	1	100%
Cluster 6: Food, Bioeconomy Natural Resources, Agriculture and Environment	5	5	100%

Results of second cut-off (10.11.2022) *Type of partner organizations*

Type of organization	All eligible proposals	Funded proposals	Proposals under threshold
Research organizations	19	19	0
Medium and Higher Schools	31	28	3
Private entities	12 (MŚP 8)	11 (MŚP7)	1 (MŚP 1)
Public entities	2	2	0

Budgets:

200 000 – 300 000 EUR – 6 proposals
 300 000 – 400 000 EUR – 17 proposals
 400 000 – 500 000 EUR – 37 proposals



Actions to improve Hop On Facility, proposed by Polish NCPs in the Widening component of WIDERA



Proposed actions

Though the National Contact Points in Poland and in all the Member States make big efforts to support the Hop On Facility, ***we are sure that some centralized measures by the EC would be of great value for this instrument.***

After internal discussions and consultations with external stakeholders of the Hop On Facility, we propose to support the Hop On Facility with a series of following actions:

Proposed actions

- *Taking into consideration that the Hop On Facility is constantly discussed on many levels and in many institutions related to its operation, but all the discussions are not centralized and are detached from each other, we propose creating by the EC of a **Centre for Hop On Support** – a point to which all the suggestions, ideas and issues regarding the improvement of the Hop On Facility from users, delegates to all PCs relevant to Hop On, NCPs etc. would be sent and there - centrally processed. Such a Centre could be established in the respective EC Unit, or – if it will be considered as an appropriate solution – under the NCP_WIDERA.NET Coordinator's Office – as an amendment to the project with additional funding of this activity.*

Proposed actions

- Filling out the “Partner Search Services” for the Hop On Facility table at the Funding and Tenders Opportunity Portal only with projects, coordinators of which have explicitly expressed their consent to the possible consideration of potential applications of additional partners from Widening states; regular updating of the table.
- Taking into consideration the issue frequently raised by the Widening states representatives that direct contact with the consortia listed by EC is a challenge for the potential applicants – to publish at the “Partner Search Services” for the Hop On Facility table at the Funding and Tenders Opportunity Portal a direct email address to a representative of the consortium coordinator, responsible for communication with the potential applicants from Widening states.

Proposed actions

- Introducing a possibility of extending the duration of a RIA project to which a new partner is added, since the Hop On procedure: application submission, the evaluation process, the amendment to the Grant Agreement procedure – is time consuming.
- Organising by the EC an information campaign for coordinators of RIA projects having no Widening partners in their consortia to inform the coordinators about the possible contacts from potential additional partners from Widening states, rights and opportunities of the coordinators in this context and the Hop On application procedure; for this purpose, it is possible to organize a number of targeted Information Days with the requirement of participation of all project coordinators of the projects eligible for Hop On.

Proposed actions

- Organising a Brokerage Event (BE) for coordinators of RIA projects eligible for Hop On and potential Hop On applicants (it may be conducted in an online mode). This BE is to be organized with the EC leadership and funding, for, (1) it is not planned in any NCP project and – consequently – no project has respective funds for its organization; (2) BEs organized by NCPs for Pillar II and NCPs of the WIDERA Programme have a different nature of matchmaking, which does not correspond to the Hop On philosophy: the “classic” BEs are the events, where coordinators and partners meet at the stage of preparing a project application; and for the Hop On Facility an event with participation of coordinators of already funded projects is needed.
- Organising a Hop On Facility Information Corner at all Brokerage Events for Pillar II clusters – as a part of all NCP projects. Raising awareness of potential coordinators and consortia applying to Pillar II calls about Hop On Facility already at such an early stage might result in enhancing collaboration and successful applying to Hop On calls in the future.

**Thank you for your
attention!**

Karina Barantseva,

National Contact Point Department

NCBR

+48 502 052 236

karina.barantseva@ncbr.gov.pl

